

### Permittee-Owned Facilities Evaluation Form

MS4 Name: AMERICAN FORK CITY Date of Evaluation: NOVEMBER 5 2010

Section 4.2.6.3 requires that the "Permittee must identify as "high-priority" those facilities or operations that have a high potential to generate storm water pollutants." Weekly inspections are required (4.2.6.6.1), and Storm Water dischargemust be evaluated quarterly at these high priority locations (4.2.6.6.3)

**Facility #:** 4124 **Description:** Fitness Center **Location:** 490 North Center Street **Priority:** LOW

	Sediments	Nutrients	Metals	Hydrocarbons	Pesticides	Chlorides	Trash	Bacteria	Evaluation
Risk of Storm Water Pollution	1	1	0	2	1	3	1	2	11
Exterior Use (Y/N)	2	1	0	2	1	0	1	0	7
Discharge to impaired waters(Y/N)	0	0	0	0	0	0	0	0	0
House keeping effectiveness(%)	TBD	TBD	TBD	TBD	TBD	TBD	TBD	TBD	TBD
Proximity to Water (ft)	<b>2364</b>								Total = 18
Values:	High = 3		Medium = 2		Low = 1		None = 0		

**Facility #:** 4125 **Description:** Cemetery **Location:** 600 North 30 West **Priority:** LOW

	Sediments	Nutrients	Metals	Hydrocarbons	Pesticides	Chlorides	Trash	Bacteria	Evaluation
Risk of Storm Water Pollution	1	1	0	1	3	0	1	0	7
Exterior Use (Y/N)	1	1	0	1	3	0	1	0	7
Discharge to impaired waters(Y/N)	0	0	0	0	0	0	0	0	0
House keeping effectiveness(%)	TBD	TBD	TBD	TBD	TBD	TBD	TBD	TBD	TBD
Proximity to Water (ft)	<b>3361</b>								Total = 14
Values:	High = 3		Medium = 2		Low = 1		None = 0		

**Facility #:** 4126 **Description:** Public Works Administration **Location:** 275 East 200 North **Priority:** HIGH

	Sediments	Nutrients	Metals	Hydrocarbons	Pesticides	Chlorides	Trash	Bacteria	Evaluation
Risk of Storm Water Pollution	2	1	2	2	1	0	2	0	10
Exterior Use (Y/N)	2	1	2	2	1	0	2	0	10
Discharge to impaired waters(Y/N)	3	3	3	3	3	0	0	0	15
House keeping effectiveness(%)	TBD	TBD	TBD	TBD	TBD	TBD	TBD	TBD	TBD
Proximity to Water (ft)	<b>30</b>								Total = 35
Values:	High = 3		Medium = 2		Low = 1		None = 0		

**Facility #:** 4127 **Description:** Operation and Maintenance **Location:** 275 East 200 North **Priority:** HIGH

	Sediments	Nutrients	Metals	Hydrocarbons	Pesticides	Chlorides	Trash	Bacteria	Evaluation
Risk of Storm Water Pollution	3	3	3	3	3	2	2	0	19
Exterior Use (Y/N)	3	1	3	3	1	0	2	0	13
Discharge to impaired waters(Y/N)	3	3	3	3	3	0	0	0	15
House keeping effectiveness(%)	TBD	TBD	TBD	TBD	TBD	TBD	TBD	TBD	TBD
Proximity to Water (ft)	<b>30</b>								Total = 47
Values:	High = 3		Medium = 2		Low = 1		None = 0		

### Permittee-Owned Facilities Evaluation Form

MS4 Name: AMERICAN FORK CITY Date of Evaluation: NOVEMBER 5 2010

Section 4.2.6.3 requires that the "Permittee must identify as "high-priority" those facilities or operations that have a high potential to generate storm water pollutants." Weekly inspections are required (4.2.6.6.1), and Storm Water discharge must be evaluated quarterly at these high priority locations (4.2.6.6.3)

**Facility #:** 4128 **Description:** Police Department **Location:** 80 North Church Street **Priority:** LOW

	Sediments	Nutrients	Metals	Hydrocarbons	Pesticides	Chlorides	Trash	Bacteria	Evaluation
Risk of Storm Water Pollution	1	0	0	1	0	0	1	0	3
Exterior Use (Y/N)	1	0	0	1	0	0	1	0	3
Discharge to impaired waters(Y/N)	0	0	0	0	0	0	0	0	0
House keeping effectiveness(%)	TBD	TBD	TBD	TBD	TBD	TBD	TBD	TBD	TBD
Proximity to Water (ft)	<b>990</b>								Total = <b>6</b>
Values:	High = 3		Medium = 2		Low = 1		None = 0		

**Facility #:** 4129 **Description:** Fire Station **Location:** 80 North Center Street **Priority:** LOW

	Sediments	Nutrients	Metals	Hydrocarbons	Pesticides	Chlorides	Trash	Bacteria	Evaluation
Risk of Storm Water Pollution	1	0	0	1	0	1	1	0	4
Exterior Use (Y/N)	1	0	0	1	0	1	1	0	4
Discharge to impaired waters(Y/N)	0	0	0	0	0	0	0	0	0
House keeping effectiveness(%)	TBD	TBD	TBD	TBD	TBD	TBD	TBD	TBD	TBD
Proximity to Water (ft)	<b>1258</b>								Total = <b>8</b>
Values:	High = 3		Medium = 2		Low = 1		None = 0		

**Facility #:** 4130 **Description:** Material Storage **Location:** 200 North 200 East **Priority:** HIGH

	Sediments	Nutrients	Metals	Hydrocarbons	Pesticides	Chlorides	Trash	Bacteria	Evaluation
Risk of Storm Water Pollution	3	2	2	2	0	0	1	0	10
Exterior Use (Y/N)	3	2	2	2	0	0	1	0	10
Discharge to impaired waters(Y/N)	3	3	3	3	0	0	3	0	15
House keeping effectiveness(%)	TBD	TBD	TBD	TBD	TBD	TBD	TBD	TBD	TBD
Proximity to Water (ft)	<b>30</b>								Total = <b>35</b>
Values:	High = 3		Medium = 2		Low = 1		None = 0		

**Facility #:** 4131 **Description:** City Administration **Location:** 50 North Church Street **Priority:** LOW

	Sediments	Nutrients	Metals	Hydrocarbons	Pesticides	Chlorides	Trash	Bacteria	Evaluation
Risk of Storm Water Pollution	1	0	0	1	0	0	1	0	3
Exterior Use (Y/N)	1	0	0	1	0	0	1	0	3
Discharge to impaired waters(Y/N)	0	0	0	0	0	0	0	0	0
House keeping effectiveness(%)	TBD	TBD	TBD	TBD	TBD	TBD	TBD	TBD	TBD
Proximity to Water (ft)	<b>1110</b>								Total = <b>6</b>
Values:	High = 3		Medium = 2		Low = 1		None = 0		

### Permittee-Owned Facilities Evaluation Form

MS4 Name: AMERICAN FORK CITY Date of Evaluation: NOVEMBER 5 2010

Section 4.2.6.3 requires that the "Permittee must identify as "high-priority" those facilities or operations that have a high potential to generate storm water pollutants." Weekly inspections are required (4.2.6.6.1), and Storm Water dischargemust be evaluated quarterly at these high priority locations (4.2.6.6.3)

**Facility #:** 4132 **Description:** City Hall **Location** 70 North Center Street **Priority:** LOW

	Sediments	Nutrients	Metals	Hydrocarbons	Pesticides	Chlorides	Trash	Bacteria	Evaluation
Risk of Storm Water Pollution	1	0	0	1	0	0	1	0	3
Exterior Use (Y/N)	1	0	0	1	0	0	1	0	3
Discharge to impaired waters(Y/N)	0	0	0	0	0	0	0	0	0
House keeping effectiveness(%)	TBD	TBD	TBD	TBD	TBD	TBD	TBD	TBD	TBD
Proximity to Water (ft)	1324							Total =	6
Values:	High = 3		Medium = 2		Low = 1		None = 0		

**Facility #:** 4133 **Description:** Library **Location** 50 South 100 East **Priority:** LOW

	Sediments	Nutrients	Metals	Hydrocarbons	Pesticides	Chlorides	Trash	Bacteria	Evaluation
Risk of Storm Water Pollution	1	0	0	1	0	0	1	0	3
Exterior Use (Y/N)	1	0	0	1	0	0	1	0	3
Discharge to impaired waters(Y/N)	0	0	0	0	0	0	0	0	0
House keeping effectiveness(%)	TBD	TBD	TBD	TBD	TBD	TBD	TBD	TBD	TBD
Proximity to Water (ft)	890							Total =	6
Values:	High = 3		Medium = 2		Low = 1		None = 0		

**Facility #:** 4134 **Description:** Boar Harbor **Location** 100 West 1800 South **Priority:** HIGH

	Sediments	Nutrients	Metals	Hydrocarbons	Pesticides	Chlorides	Trash	Bacteria	Evaluation
Risk of Storm Water Pollution	2	2	1	2	1	1	2	3	14
Exterior Use (Y/N)	2	2	2	2	2	1	2	0	13
Discharge to impaired waters(Y/N)	3	3	3	3	3	3	3	3	24
House keeping effectiveness(%)	TBD	TBD	TBD	TBD	TBD	TBD	TBD	TBD	TBD
Proximity to Water (ft)	0							Total =	51
Values:	High = 3		Medium = 2		Low = 1		None = 0		

**Facility #:** 4135 **Description:** Fox Hollow Golf Course **Location** 200 East 1500 North **Priority:** HIGH

	Sediments	Nutrients	Metals	Hydrocarbons	Pesticides	Chlorides	Trash	Bacteria	Evaluation
Risk of Storm Water Pollution	2	1	0	2	2	0	1	0	8
Exterior Use (Y/N)	2	2	0	2	3	0	1	0	10
Discharge to impaired waters(Y/N)	3	3	3	3	3	3	3	3	24
House keeping effectiveness(%)	TBD	TBD	TBD	TBD	TBD	TBD	TBD	TBD	TBD
Proximity to Water (ft)	0							Total =	42
Values:	High = 3		Medium = 2		Low = 1		None = 0		

### Permittee-Owned Facilities Evaluation Form

MS4 Name: AMERICAN FORK CITY Date of Evaluation: NOVEMBER 5 2010

Section 4.2.6.3 requires that the "Permittee must identify as "high-priority" those facilities or operations that have a high potential to generate storm water pollutants." Weekly inspections are required (4.2.6.6.1), and Storm Water dischargemust be evaluated quarterly at these high priority locations (4.2.6.6.3)

**Facility #:** 4136      **Description:** Amphitheater      **Location:** 700 North 900 East      **Priority:** LOW

	Sediments	Nutrients	Metals	Hydrocarbons	Pesticides	Chlorides	Trash	Bacteria	Evaluation
Risk of Storm Water Pollution	1	1	0	1	1	0	1	0	5
Exterior Use (Y/N)	1	1	0	1	1	0	1	0	5
Discharge to impaired waters(Y/N)	0	0	0	0	0	0	0	0	0
House keeping effectiveness(%)	TBD	TBD	TBD	TBD	TBD	TBD	TBD	TBD	TBD
Proximity to Water (ft)									Total = 10
Values:	High = 3		Medium = 2		Low = 1		None = 0		

**Facility #:**      **Description:**      **Location:**      **Priority:**

	Sediments	Nutrients	Metals	Hydrocarbons	Pesticides	Chlorides	Trash	Bacteria	Evaluation
Risk of Storm Water Pollution									0
Exterior Use (Y/N)									0
Discharge to impaired waters(Y/N)									0
House keeping effectiveness(%)									
Proximity to Water (ft)									Total = 0
Values:	High = 3		Medium = 2		Low = 1		None = 0		

**Facility #:**      **Description:**      **Location:**      **Priority:**

	Sediments	Nutrients	Metals	Hydrocarbons	Pesticides	Chlorides	Trash	Bacteria	Evaluation
Risk of Storm Water Pollution									0
Exterior Use (Y/N)									0
Discharge to impaired waters(Y/N)									0
House keeping effectiveness(%)									
Proximity to Water (ft)									Total = 0
Values:	High = 3		Medium = 2		Low = 1		None = 0		

**Facility #:**      **Description:**      **Location:**      **Priority:**

	Sediments	Nutrients	Metals	Hydrocarbons	Pesticides	Chlorides	Trash	Bacteria	Evaluation
Risk of Storm Water Pollution									0
Exterior Use (Y/N)									0
Discharge to impaired waters(Y/N)									0
House keeping effectiveness(%)									
Proximity to Water (ft)									Total = 0
Values:	High = 3		Medium = 2		Low = 1		None = 0		

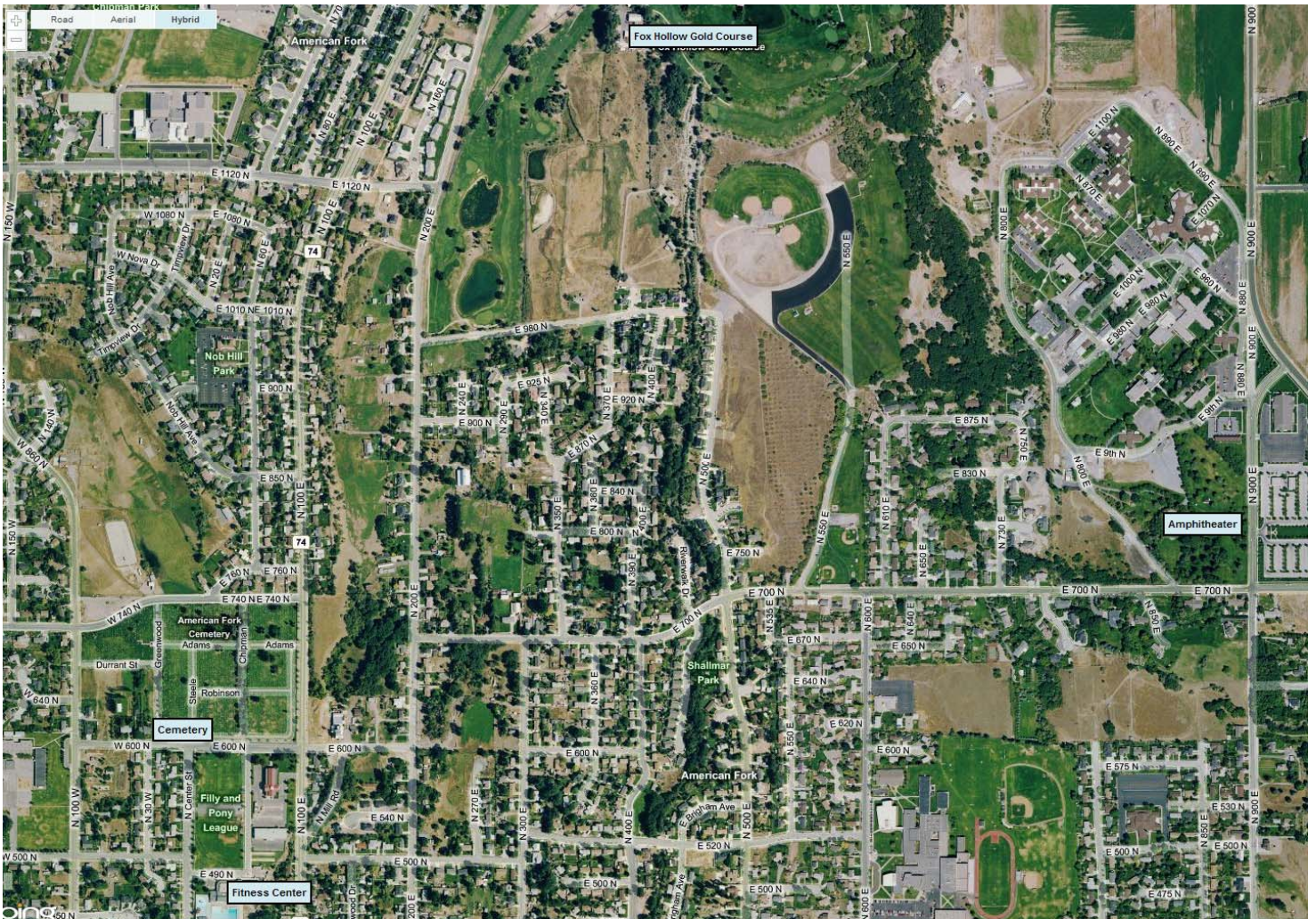
## CITY OWNED FACILITIES INVENTORY

4.2.6.1. Permittees shall develop and keep current a written inventory of Permittee-owned or operated facilities and storm water controls that may include but is not limited to:

- Composting facilities
- Equipment storage and maintenance facilities:  
*This facility is located within the Public Works Complex area.*
- Fuel farms
- Hazardous waste disposal facilities
- Hazardous waste handling and transfer facilities
- Incinerators
- Landfills
- Landscape maintenance on municipal property:  
*The Parks Department is located within the Operation and Maintenance Complex.*
- Materials storage yards:  
*The Material Storage Area is located West of the O&M building.*
- Pesticide storage facilities:  
*These chemicals are stored inside the Parks Department building.*
- Public buildings:
  - a. Libraries: *Located South of Robinson Park*
  - b. Police station: *Located North of City Hall*
  - c. Fire station: *Located North of City Hall*
  - d. Municipal building: *City Hall*
  - e. Similar Permittee-owned or operated buildings: *Boat Harbor located by Utah Lake.*
- Public parking lots: *By City Hall*
- Public golf courses: *Fox Hollow Gold Course*
- Public swimming pool: *At the Fitness Center*



- Public works yards: *Part of the O&M parking area*
- Recycling facilities
- Salt storage facilities: *Part of the Material Storage area*
- Solid waste handling and transfer facilities
- Street repair and maintenance sites: *Part of the O&M Building*
- Vehicle storage and maintenance yards: *Part of the O&M Building*



Map Showing:

1. Fox Hollow Golf Course
2. Amphitheater
3. Cemetery
4. Fitness Center





Map showing:

1. Public Works Administration
2. Operation and Maintenance Complex
3. Material Storage
4. Police Department
5. Fire Station
6. City Hall
7. City Administration
8. Library





Map showing:

1. Boat Harbor